

## Structalite® Maximum Strength Structural Adhesives

The Structalite® products are one and two-component multi-purpose adhesives that provide maximum strength.

Structalite® can also be used in special and high-tech applications, for example in PCB production, where it is used as a black, thermally curing 1-part sealing compound.

They are ideal for bonding a wide range of different materials.

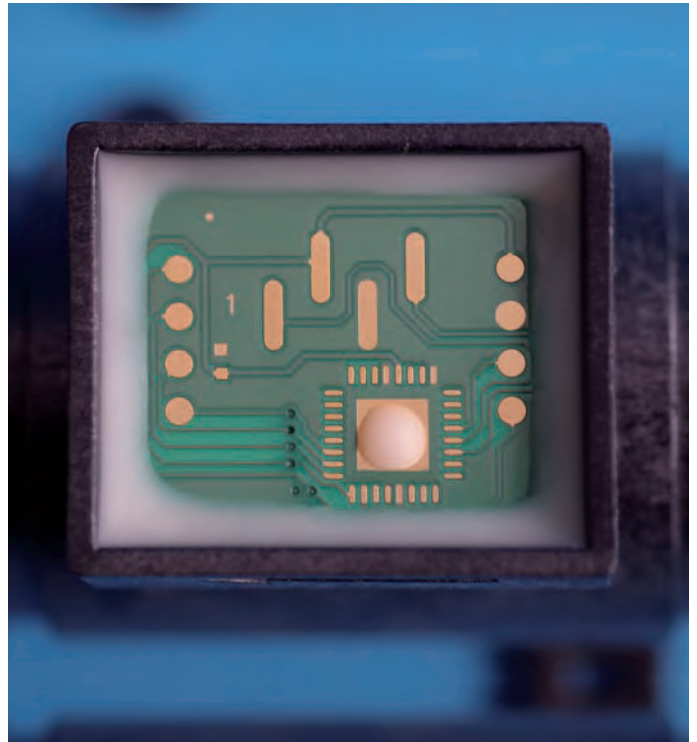
### Typical Applications

#### Single-Component: Bonding Metal Constructions:

- For sheet metalwork, electronic or high-tech applications

#### Two-Component: For Large bonded Parts that have to cure at Room Temperature:

- Sealant
- Heat-resistant plastic bonds



Adhesive	Application	Viscosity [mPas]	Base	Curing*	Properties
<b>Structalite® 1028 R</b>	General applications	16,000–24,000	2-part epoxy	Room temper.	Versatile applications, easily dispensable with double cartridge
<b>Structalite® 3060</b>	Attaching components on PCBs, Die attach, Smart Card, Plastic bonding	30,000–40,000	Epoxy	thermal	Fast curing, fixing components on PCBs, corner bonding, glob top, SMD applications
<b>Structalite® 5604</b>	Attaching components on PCBs, Die attach, Smart Card, Plastic bonding	25,000–40,000	Epoxy	thermal	Fast curing, red color, fixing components on PCBs, SMD applications
<b>Structalite® 5610</b>	Attaching components on PCBs	shear thinning	Epoxy	thermal	Cures fast at low temperatures, high temperature resistance, red color, fixing components on PCBs, SMD applications
<b>Structalite® 5800</b>	Encapsulation of electronic components, Plastic bonding, Automotive, Aerospace	7,000–15,000	2-part epoxy	thermal/room temperature	High temperature resistance, short pot life, fast application
<b>Structalite® 5810</b>	Encapsulation of electronic components, Potting Material, Plastic bonding, Automotive, Aerospace, Glass bonding	2,000–3,000	2-part epoxy	thermal/room temperature	Very high adhesion to PC, resistant to moisture and chemicals
<b>Structalite® 5820</b>	Potting Material	20,000–25,000	Epoxy	thermal	transparent, high adhesion to metals
<b>Structalite® 5830</b>	Attaching components on PCBs, Potting Material, Automotive, Aerospace	28,000–38,000	Epoxy	thermal	Yellow color, adheres well to metal, impact resistant, high peel strength

\*UV = 320 – 390 nm, VIS = 405 nm

Adhesive	Application	Viscosity [mPas]	Base	Curing*	Properties
<b>Structalite® 5891</b>	Glob top encapsulation, Attaching components on PCBs	300,000–400,000	Epoxy	thermal	Black color, fast curing at low temperatures, impact resistant
<b>Structalite® 5891 T</b>	Glob top encapsulation, Attaching components on PCBs	80,000–150,000	Epoxy	thermal	Black color, stable frame mat., can be applied wet-in-wet with filling material (e.g. Structalite® 5893), stable edges, resistant to shocks
<b>Structalite® 5893</b>	Glob top encapsulation, Attaching components on PCBs, Medical Grade Adhesive, Needle Bonding	6,000–10,000	Epoxy	thermal	Black color, excellent flow properties, filling material, high resistance to heat and chemicals, certified to ISO 10993–5 standards
<b>Structalite® 5894</b>	Glob top encapsulation, Encapsulation of electronic components, Attaching components on PCBs, Automotive, Aerospace, Potting Material	45,000–55,000	Epoxy	thermal	Black color, excellent flow properties, filling material, very high resistance to heat and chemicals
<b>Structalite® 701</b>	Lens bonding cement, Optical cement, Medical Grade Adhesive	3,000–5,000	2-part epoxy	thermal	Transparent in thin layers, long potlife, fast curing, certified to USP Class VI and ISO 10993–5 standards
<b>Structalite® 8801</b>	Attaching components on PCBs, Encapsulation of electronic components, Encapsulation of plastic parts, Potting Material Automotive, Aerospace, Medical Grade Adhesive	30,000 – 45,000	Epoxy	thermal	Resistant to oils, grease and fuels, excellent flow properties, beige color, certified to ISO 10993–5 standards
<b>Structalite® 8801 black</b>	Attaching components on PCBs, Encapsulation of electronic components, Encapsulation of plastic parts, Potting Material Automotive, Aerospace	30,000 – 45,000	Epoxy	thermal	Resistant to oils, grease and fuels, black color, excellent flow properties
<b>Structalite® 8801 T</b>	Attaching components on PCBs, Encapsulation of electronic components, Attaching components on PCBs, Encapsulation of plastic parts, Potting Material, Automotive, Aerospace	thixotropic	Epoxy	thermal	Resistant to oils, grease and fuels, stable
<b>Structalite® 8805</b>	Attaching components on PCBs, Encapsulation of electronic components, Attaching components on PCBs, Encapsulation of plastic parts, Potting Material, Automotive, Aerospace	30,000 – 45,000	Epoxy	thermal	Resistant to oils, grease and fuels, excellent flow properties, beige color
<b>Structalite® 8838</b>	Attaching components on PCBs, Encapsulation of electronic components, Attaching components on PCBs	6,500–7,500	Epoxy	thermal	Black color, flexible potting compound, excellent flow properties
<b>Structalite® 8926</b>	Attaching components on PCBs, Encapsulation of electronic components, Encapsulation of plastic parts, Potting Material, Automotive, Aerospace	30,000 – 45,000	Epoxy	thermal	Resistant to oils, grease and fuels, excellent flow properties, beige color